

	Apr.13	May.13	Jun.13	Jul.13
<b>1 Monetary</b>	<i>(Millions of US\$)</i>			
CBL Net Foreign Exchange Reserves Position (Including SDRs)	285.6	280.0	286.4	276.8
	<i>(Millions of L\$)</i>			
Liberian Dollars in Circulation	8,096.0	8,088.8	8,147.2	8,244.0
Money Supply (M1) in L\$ only	8,774.7	8,739.1	8,824.6	9,074.4
Broad money (M2) in L\$ only	12,483.1	12,507.3	12,654.7	12,955.0
Broad money (M2) in both L\$ and US\$*	46,765.5	49,370.3	48,085.5	49,396.3
	<i>(In percent)</i>			
Liberian Dollar share of Broad Money	26.7	25.3	26.3	26.2
Interest Rates				
- Lending rate	14.0	13.2	13.6	13.5
-Average Deposit rates				
-Savings	3.0	2.0	2.0	2.0
-Time	4.0	3.8	2.0	3.9
	<i>(Millions of \$)</i>			
Commercial banks loans to private sector - US\$	289.60	290.00	298.90	304.30
Commercial banks loans to private sector - L\$	888.6	881.9	896.6	1,131.2
- Demand Deposits of commercial banks				
Demand deposits - US\$	306.5	331.8	317.6	324.7
Demand deposits - L\$	2,338.7	2,243.7	2,349.9	2,662.9
- Time & Savings Deposits of commercial banks				
Time & savings deposits - US\$	140.8	143.5	145.1	143.9
Time & savings deposits - L\$	3,664.0	3,722.0	3,799.6	3,851.3
- Other Deposits**				
Actual US\$ component of other deposits	6.8	6.5	0.7	1.8
Liberian \$ component of savings deposits	44.4	46.2	9.7	8.8
Remittances				
Inflows	65.1 <sup>†</sup>	89.9 <sup>†</sup>	80.6	75.6
Outflows	84.8 <sup>†</sup>	125.7 <sup>†</sup>	151.9	108.5
Netflows	-19.7 <sup>†</sup>	-35.8 <sup>†</sup>	-71.30	-32.9
<b>2 CBL's Foreign Exchange Auction</b>	8.0	10.0	8.0	7.8
<b>3 Exchange Rate</b>				
End of Period	75.50	76.50	76.50	77.50
Period Average	75.50	75.63	76.54	77.06
<b>4 Financial Soundness Indicators (FSI)</b>	<i>(In percent)</i>			
Capital adequacy ratio (CAR)***	24.8 <sup>†</sup>	26.2 <sup>†</sup>	25.0	24.6
Non-performing Loans to Total Loans	19.5	17.9	18.8	19.1
Non-performing Loans (percentage change)	5.0	-6.6	7.3	10.9
Returns on Assets	-0.66	-0.45	-0.71	-1.23
Returns on Equity (ROE)	4.85	-3.3	-5.3	-9.6
Liquidity Ratio****	43.1	41.1	40.2	37.8

\*US\$ converted to L\$

\*\*Other Deposits Include Official and Manager Checks

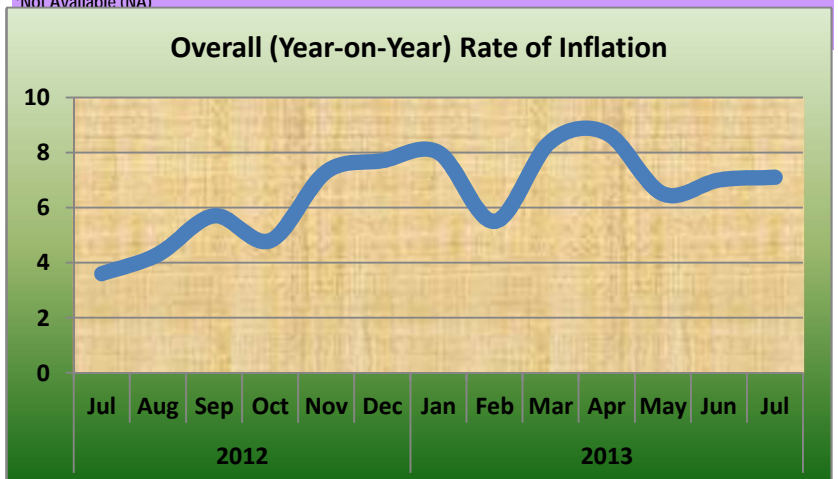
\*\*\*The Minimum Capital Adequacy Ratio is 10%

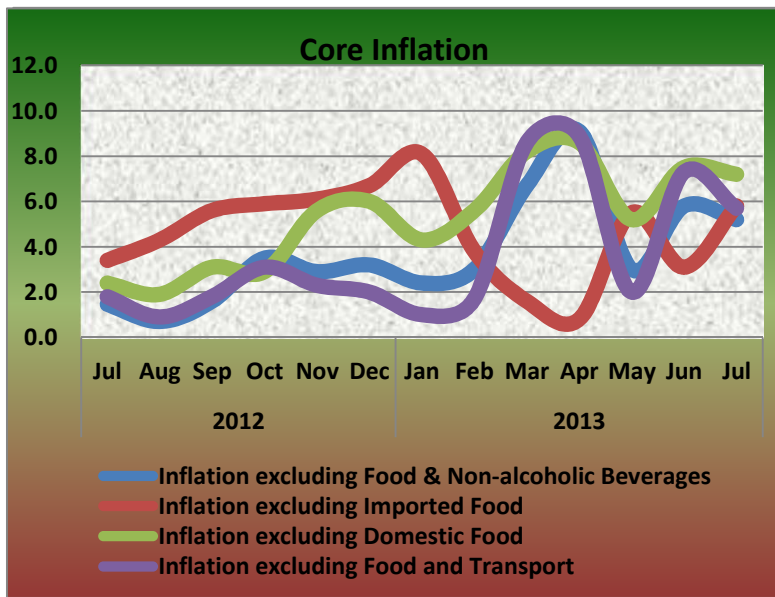
\*\*\*\*The Required Minimum Liquidity Ratio is 15%

	Apr.13	May.13	Jun.13	Jul.13
<b>5a External Trade (Value)</b>	<i>(Millions of US\$)</i>			
Exports	36.5	81.7	42.3 <sup>†</sup>	39.1
- O/w Rubber	2.7	21.7	12.2	0.0
Imports	86.3	89.6	106.1	112.0
- O/w Rice				
Commercial	0.6	16.4	17.0	4.9
Non-commercial	0.0	0.0	0.0	0.0
- Petroleum Products	23.5	17.5	23.4	28.0
Trade Balance	-49.8	-7.9	-63.8	-72.9
<b>5b External Trade (Volume)</b>	<i>(Metric Tons)</i>			
- Rubber	1,079.1	8,434.7	6,098.4	-
- Rice Imports O/w				
Commercial	1,233.0	31,804.1	31,868.6	7,860.6
Non-commercial	0.0	0.0	0.0	0.0
- Petroleum Products	21,835.6	17,770.5	22,949.0	27,109.6
	<i>(In percent)</i>			
<b>6 Overall (Year-on-year) Rate of Inflation</b>	8.7	6.5	7.0	7.1
a. Food and Non-alcoholic Beverages Inflation	15.0	9.9	11.1	8.8
- Domestic Food Inflation	13.4	10.3	10.5	6.8
- Imported Food Inflation	16.6	9.5	11.7	10.8
b. Transport Inflation	9.6	8.7	0.3	2.3
c. Imported Fuels Inflation	-1.7	-4.8	-6.0	0.9
<b>Core Inflation</b>				
Inflation excluding Food & Non-alcoholic Beverages	2.1 <sup>†</sup>	3.0 <sup>†</sup>	2.7	5.2
Inflation excluding Imported Food	5.9 <sup>†</sup>	5.5 <sup>†</sup>	5.4	5.8
Inflation excluding Domestic Food	7.1 <sup>†</sup>	5.2 <sup>†</sup>	5.8	7.2
Inflation excluding Food and Transport	0.8 <sup>†</sup>	2.0 <sup>†</sup>	3.1	5.7

<sup>†</sup>Revised

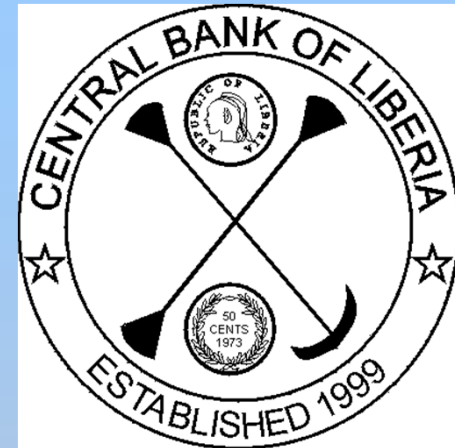
<sup>†</sup>Not Available (NA)





**CENTRAL BANK OF LIBERIA**

# CENTRAL BANK OF LIBERIA



## Fact Sheet on Key Economic and Financial Indicators

July, 2013

Corner of Warren and Carey Streets  
 P. O. Box 2048, Monrovia  
 Tel: 231-5-960557/5-960556  
 Fax: (231) 770-59642  
 Website: [www.cbl.org.lr](http://www.cbl.org.lr)