

	Sep.13	Oct.13	Nov.13	Dec.13
<b>1 Monetary</b>	<i>(Millions of US\$)</i>			
CBL Net Foreign Exchange Reserves Position (Including SDRs) <sup>†</sup>	213.9	216.4 <sup>†</sup>	215.5	242.9
	<i>(Millions of L\$)</i>			
Liberian Dollars in Circulation	8,513.8	8,562.2	8,600.6	9,468.0
Money Supply (M1) in L\$ only	9,636.6	9,507.8	9,809.7	11,325.0
Broad money (M2) in L\$ only	14,080.1	14,170.9	14,497.7	15,446.7
Broad money (M2) in both L\$ and US\$*	49,285.0	49,189.6	52,807.8	54,956.4
	<i>(In percent)</i>			
Liberian Dollar share of Broad Money	28.6	28.8	27.5	28.1
Interest Rates				
- Lending rate	13.5	13.5	13.7	13.7
-Average Deposit rates				
-Savings	2.0	2.0	2.0	2.0
-Time	3.0	3.0	3.0	2.5
	<i>(Millions of \$)</i>			
Commercial banks loans to private sector - US\$	310.80	309.90	317.00	310.80
Commercial banks loans to private sector - L\$	1,251.3	1,276.6	1,332.6	1,338.3
- Demand Deposits of commercial banks				
Demand deposits - US\$	300.1	298.8	328.7	331.4
Demand deposits - L\$	3,077.7	2,734.5	2,637.4	3,053.3
- Time & Savings Deposits of commercial banks				
Time & savings deposits - US\$	139.4	132.8	140.6	147.2
Time & savings deposits - L\$	4,434.9	4,654.9	4,679.8	4,111.6
- Other Deposits**				
Actual US\$ component of other deposits	0.6	0.7	0.7	0.3
Liberian \$ component of savings deposits	8.6	8.1	8.2	10.1
Remittances	<i>(Millions of US\$)</i>			
Inflows	72.8	102.6	93.0	146.0
Outflows	125.3	116.9	88.5	127.5
Netflows	-52.51	-14.30	4.50	18.50
<b>2 CBL's Foreign Exchange Auction</b>	3.0	3.0	1.8	0.9
<b>3 Exchange Rate</b>				
End of Period	80.00	81.00	81.50	82.50
Period Average	79.64	80.57	80.98	81.88
<b>4 Financial Soundness Indicators (FSI)</b>	<i>(In percent)</i>			
Capital adequacy ratio (CAR)***	23.7 <sup>†</sup>	23.1 <sup>†</sup>	22.9 <sup>†</sup>	24.9
Non-performing Loans to Total Loans	19.1	16.7	14.4	14.8
Non-performing Loans (percentage change)	1.5	-8.0	11.6	3.8
Returns on Assets	-0.79 <sup>†</sup>	-0.73	-0.71	-0.50
Returns on Equity (ROE)	-5.77 <sup>†</sup>	-5.29 <sup>†</sup>	-5.42 <sup>†</sup>	-3.81
Liquidity Ratio****	32.1	28.9	33.6	36.1

\*US\$ converted to L\$

\*\*Other Deposits Include Official and Manager Checks

\*\*\*The Minimum Capital Adequacy Ratio is 10%

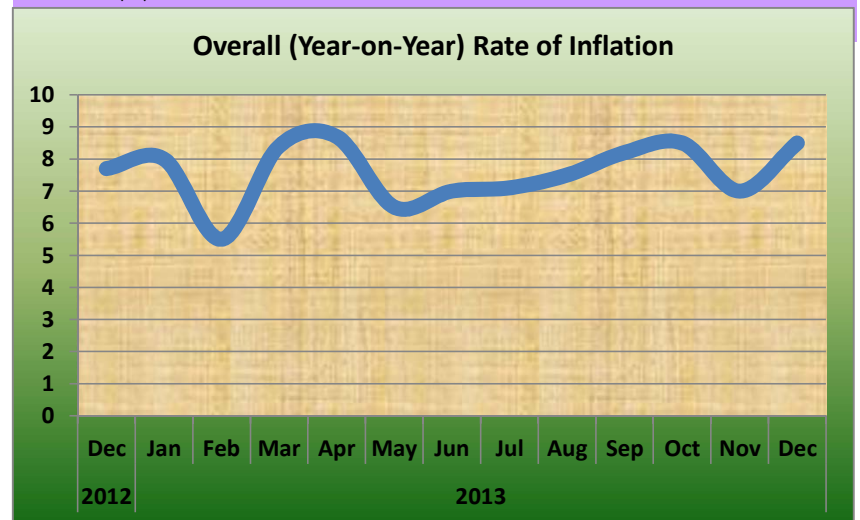
\*\*\*\*The Required Minimum Liquidity Ratio is 15%

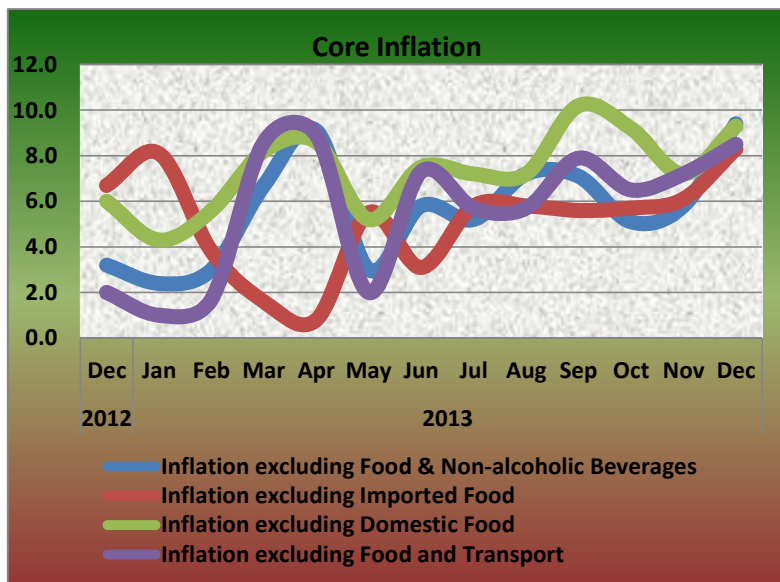
<sup>†</sup>Reserves exclude ECF borrowing from the IMF

	Sep.13	Oct.13	Nov.13	Dec.13
<b>5a External Trade (Value)</b>	<i>(Millions of US\$)</i>			
Exports	31.1	50.8	59.6	52.5
- O/w Iron Ore	17.6	39.6	28.1	37.0
- O/w Rubber	9.9	2.5	27.9	9.9
Imports	99.0	77.2	95.0	85.9
- O/w Rice				
Commercial	6.5	4.7	7.4	0.6
Non-commercial	0.0	0.0	0.0	0.0
- Petroleum Products	22.4	22.6	27.5	33.4
Trade Balance	-67.9	-26.4	-35.4	-33.4
<b>5b External Trade (Volume)</b>	<i>(Metric Tons)</i>			
- Rubber	5,073.2	1,108.9	11,398.4	5,443.2
-Iron Ore	255,800.0 <sup>†</sup>	555,650.0 <sup>†</sup>	407,670.0	523,500.0
- Rice Imports O/w				
Commercial	12,034.2	8,548.0	4,678.0	957.7
Non-commercial	0.0	0.0	0.0	0.0
- Petroleum Products	19,724.2	21,047.5	24,189.0	33,210.7
	<i>(In percent)</i>			
<b>6 Overall (Year-on-year) Rate of Inflation</b>	8.2	8.5	7.0	8.5
a. Food and Non-alcoholic Beverages Inflation	9.1	11.6	8.1	7.7
- Domestic Food Inflation	2.9	6.7	6.5	6.3
- Imported Food Inflation	15.9	17.0	9.8	9.2
b. Transport Inflation	2.8	-2.9	-2.1	14.4
c. Imported Fuels Inflation	2.6	2.1	4.3	6.1
<b>Core Inflation</b>				
Inflation excluding Food & Non-alcoholic Beverages	7.1	5.1	5.8	9.4
Inflation excluding Imported Food	5.6	5.7	6.1	8.3
Inflation excluding Domestic Food	10.2	9.2	7.2	9.3
Inflation excluding Food and Transport	7.9	6.5	7.2	8.5

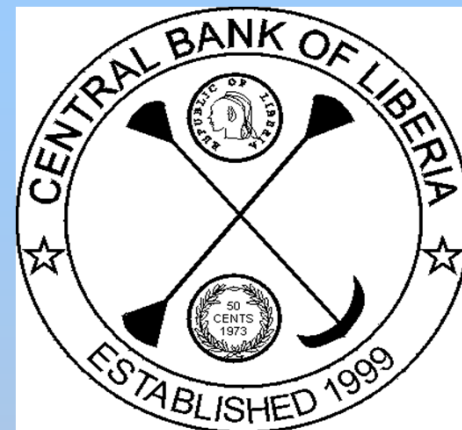
<sup>†</sup>Revised

<sup>‡</sup>Not Available (NA)





# CENTRAL BANK OF LIBERIA



## Fact Sheet on Key Economic and Financial Indicators December, 2013



**CENTRAL BANK OF LIBERIA**

Corner of Warren and Carey Streets  
 P. O. Box 2048, Monrovia  
 Tel: 231-5-960557/5-960556  
 Fax: (231) 770-59642  
 Website: [www.cbl.org.lr](http://www.cbl.org.lr)