

		Nov.13	Dec.13	Jan.14	Feb.14
1	Monetary	<i>(Millions of US\$)</i>			
	CBL Net Foreign Exchange Reserves Position (Including SDRs) [‡]	215.5	242.9	239.9	228.4
		<i>(Millions of L\$)</i>			
	Liberian Dollars in Circulation	8,600.6	9,468.0	8,592.2	8,560.8
	Money Supply (M1) in L\$ only	9,809.7	11,325.0	10,606.3	10,419.3
	Broad money (M2) in L\$ only	14,497.7	15,446.7	14,884.6	14,853.1
	Broad money (M2) in both L\$ and US\$*	52,807.8	54,956.4	51,765.4	53,396.8
		<i>(In percent)</i>			
	Liberian Dollar share of Broad Money	27.5	28.1	28.8	27.8
	Interest Rates				
	- Lending rate	13.7	13.7	13.7	13.5
	-Average Deposit rates				
	-Savings	2.0	2.0	2.0	2.0
	-Time	3.0	2.5	4.0	3.8
		<i>(Millions of \$)</i>			
	Commercial banks loans to private sector - US\$	317.0	310.8	316.5	296.6
	Commercial banks loans to private sector - L\$	1,332.6	1,338.3	1,403.7	1,343.1
	- Demand Deposits of commercial banks				
	Demand deposits - US\$	328.7	331.4	315.1	313.1
	Demand deposits - L\$	2,637.4	3,053.3	3,118.5	3,073.4
	- Time & Savings Deposits of commercial banks				
	Time & savings deposits - US\$	140.6	147.2	142.5	148.3
	Time & savings deposits - L\$	4,679.8	4,111.6	4,268.3	4,423.5
	- Other Deposits**				
	Actual US\$ component of other deposits	0.7	0.3	0.5	0.2
	Liberian \$ component of savings deposits	8.2	10.1	9.9	10.3
	Remittances	<i>(Millions of US\$)</i>			
	Inflows	93.0	146.0	110.8	103.8
	Outflows	88.5	127.5	182.2	144.0
	Netflows	4.51	18.50	(71.42)	(40.21)
2	CBL's Foreign Exchange Auction	1.8	0.9	7.2	4.3
3	Exchange Rate				
	End of Period	81.50	82.50	80.50	83.50
	Period Average	80.98	81.88	83.57	81.38
4	Financial Soundness Indicators (FSI)	<i>(In percent)</i>			
	Capital adequacy ratio (CAR)***	22.9 [†]	24.9	24.7	23.0
	Non-performing Loans to Total Loans	14.4	14.8	14.6	15.6
	Non-performing Loans (percentage change)	11.6	3.8	-2.5	10.0
	Returns on Assets	-0.71	-0.50	-0.32	-0.62
	Returns on Equity (ROE)	-5.42 [†]	-3.81	-2.38	-4.63
	Liquidity Ratio****	33.6	36.1	29.8	25.6

*US\$ converted to L\$

**Other Deposits Include Official and Manager Checks

***The Minimum Capital Adequacy Ratio is 10%

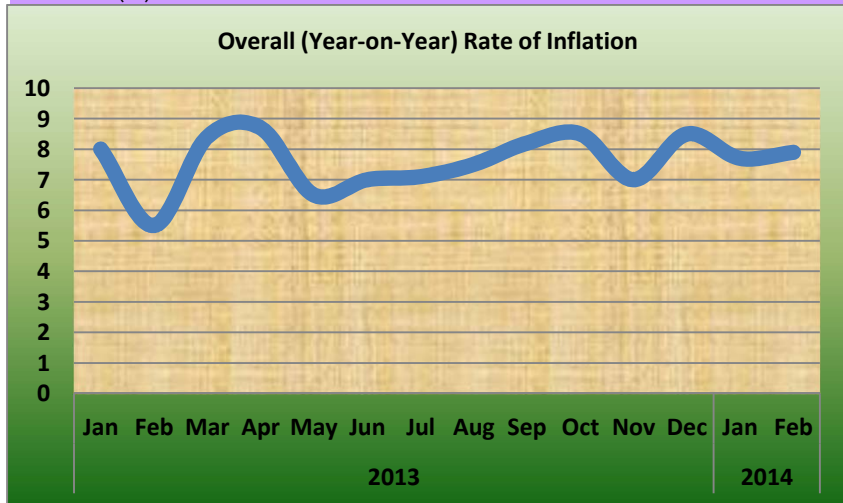
****The Required Minimum Liquidity Ratio is 15%

[‡]Reserves exclude ECF borrowing from the IMF

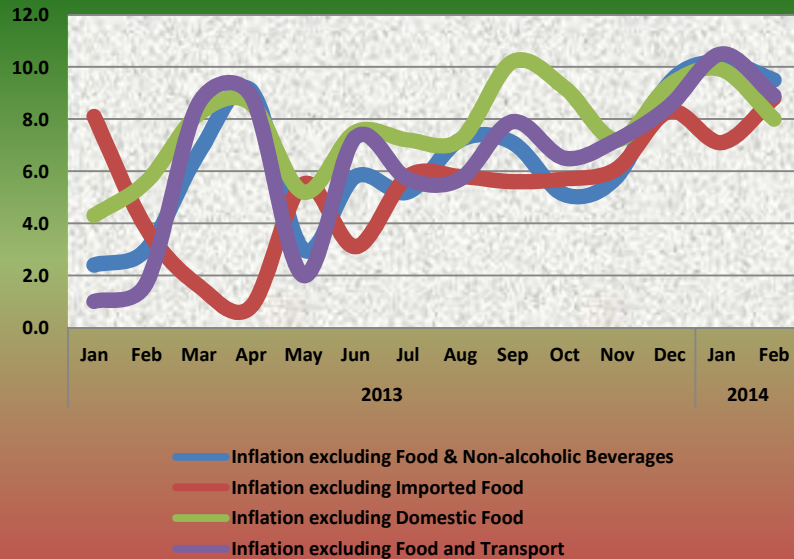
		Nov.13	Dec.13	Jan. 14	Feb. 14
5a	External Trade (Value)	<i>(Millions of US\$)</i>			
	Exports	59.6	48.8 [†]	51.0	55.8
	- O/w Iron Ore	28.1	26.2 [†]	39.0	29.3
	- O/w Rubber	27.9	9.9	6.8	15.6
	Imports	69.2 [†]	89.3 [†]	74.5	104.4
	- O/w Rice				
	Commercial	13.3 [†]	0.6	0.3	11.3
	Non-commercial	0.0	0.0	0.0	0.0
	- Petroleum Products	8.2 [†]	33.4	18.2	30.5
	Trade Balance	-9.6 [†]	-40.5 [†]	-23.5	-48.6
5b	External Trade (Volume)	<i>(Metric Tons)</i>			
	- Rubber	11,398.4	5,443.2	2,873.2	7,805.9
	-Iron Ore	407,670.0	372,663.4 [†]	541,430.0	409,000.0
	- Rice Imports O/w				
	Commercial	21,445.1 [†]	933.1 [†]	527.8	25,182.6
	Non-commercial	0.0	0.0	0.0	0.0
	- Petroleum Products	5,479.4 [†]	33,210.7	17,117.2	30,612.8
		<i>(In percent)</i>			
6	Overall (Year-on-year) Rate of Inflation	7.0	8.5	7.7	7.9
	a. Food and Non-alcoholic Beverages Inflation	8.1	7.7	5.6	6.4
	- Domestic Food Inflation	6.5	6.3	2.1	7.6
	- Imported Food Inflation	9.8	9.2	9.4	5.3
	b. Transport Inflation	-2.1	14.4	8.5	12.6
	c. Imported Fuels Inflation	4.3	6.1	6.3	2.9
	Core Inflation				
	Inflation excluding Food & Non-alcoholic Beverages	5.8	9.4	10.2	9.5
	Inflation excluding Imported Food	6.1	8.3	7.1	8.8
	Inflation excluding Domestic Food	7.2	9.3	9.9	8.0
	Inflation excluding Food and Transport	7.2	8.5	10.5	8.9

[†]Revised

[‡]Not Available (NA)



Core Inflation



CENTRAL BANK OF LIBERIA



Fact Sheet on Key Economic and Financial Indicators February, 2014

Corner of Warren and Carey Streets
P. O. Box 2048, Monrovia
Tel: 231-5-960557/5-960556
Fax: (231) 770-59642
Website: www.cbl.org.lr



CENTRAL BANK OF LIBERIA