

	Mar. 14	Apr. 14	May-14	Jun-14
<b>1 Monetary</b>	<i>(Millions of US\$)</i>			
CBL Net Foreign Exchange Reserves Position (including SDRs) <sup>1</sup>	233.0	232.4	238.4	241.3
	<i>(Millions of L\$)</i>			
Liberian Dollars in Circulation	8,820.2	8,873.2	9,023.6	9,029.3
Money Supply (M1) in L\$ only	10,830.5	10,705.7	10,583.9	10,648.4
Broad money (M2) in L\$ only	15,318.6	14,343.3	14,315.7 <sup>h</sup>	14,488.5
Broad money (M2) in both L\$ and US\$ <sup>*</sup>	54,326.9	54,080.6	52,267.2	52,022.8
	<i>(In percent)</i>			
Liberian Dollar share of Broad Money	28.2	26.5	27.4	27.9
Interest Rates				
- Lending rate	13.7	13.4	13.3	13.7
-Average Deposit rates				
-Savings	2.0	2.0	2.0	2.0
-Time	3.8	4.2	4.0	4.5
	<i>(Millions of \$)</i>			
Commercial banks loans to private sector - US\$	317.0	318.3	304.9	303.9
Commercial banks loans to private sector - L\$	1,410.6	1,516.4	1,608.9	1,664.7
- Demand Deposits of commercial banks				
Demand deposits - US\$	306.8	304.2	282.0	262.4
Demand deposits - L\$	3,124.3	2,977.4	2,944.1	3,201.9
- Time & Savings Deposits of commercial banks				
Time & savings deposits - US\$	149.1	148.0	156.3	151.7
Time & savings deposits - L\$	4,476.6	3,627.7	3,718.0	3,825.3
- Other Deposits <sup>**</sup>				
Actual US\$ component of other deposits	0.3	1.9	0.45	0.63
Liberian \$ component of savings deposits	11.4	9.9	13.9	14.8
Remittances	<i>(Millions of US\$)</i>			
Inflows	95.8	110.4	112.2	117.5
Outflows	102.7	144.3	133.7	129.8
Netflows	(7.0)	(33.9)	(21.48)	(12.3)
<b>2 CBL's Foreign Exchange Auction</b>	3.0	3.8	6.8	3.25
<b>3 Exchange Rate</b>				
End of Period	85.5	87.5	86.50	90.50
Period Average	84.38	86.62	86.57	89.22
<b>4 Financial Soundness Indicators (FSI)</b>	<i>(In percent)</i>			
Capital adequacy ratio (CAR) <sup>***</sup>	20.5	22.2	22.3 <sup>h</sup>	-21.6
Non-performing Loans to Total Loans	14.5	15.3	15.5 <sup>h</sup>	15.5
Non-performing Loans (percentage change)	-5.1	3.1	8.1 <sup>h</sup>	8.1
Returns on Assets	-0.35	-0.51	-0.23 <sup>h</sup>	-0.29
Returns on Equity (ROE)	-2.61	-4.02	-1.61 <sup>h</sup>	-1.96
Liquidity Ratio <sup>****</sup>	25.4	41.2	41.6 <sup>h</sup>	41.6

<sup>\*</sup>US\$ converted to L\$

<sup>\*\*</sup>Other Deposits Include Official and Manager Checks

<sup>\*\*\*</sup>The Minimum Capital Adequacy Ratio is 10%

<sup>\*\*\*\*</sup>The Required Minimum Liquidity Ratio is 15%

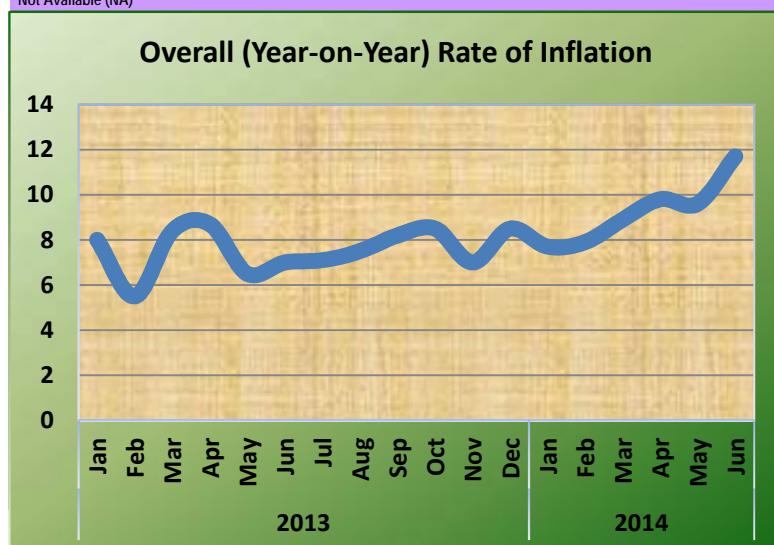
<sup>h</sup> Revised

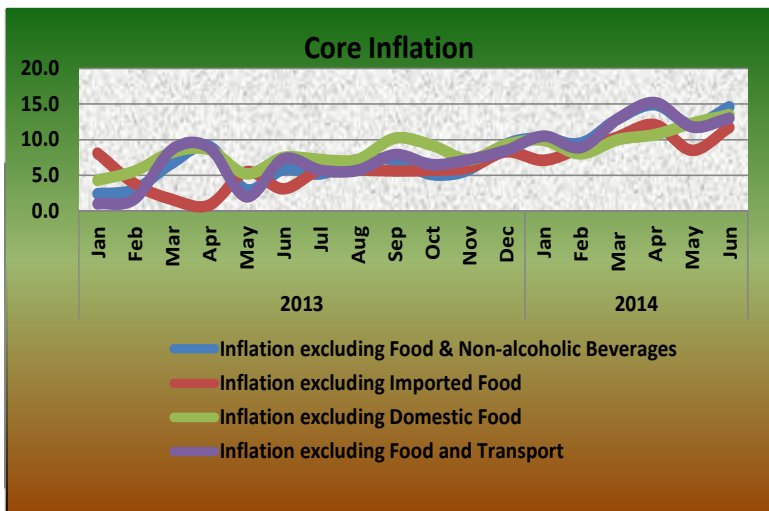
<sup>1</sup>Reserves exclude ECF borrowing from the IMF

	Mar. 14	Apr. 14	May-14	Jun-14
<b>5a External Trade (Value)</b>	<i>(Millions of US\$)</i>			
Exports	45.8	54.5	53.2	34.8
- O/w Iron Ore	32.3	37.1	30.5	21.2
- O/w Rubber	7.8	8.6	4.2	8.6
Imports	85.5	99.5	62.2	79.4
- O/w Rice				
Commercial	0.14	7.3	2.6	0.10
Non-commercial	0.0	0.0	0.0	0.01
- Petroleum Products	27.1	34.3	8.3	21.2
Trade Balance	-39.7	-45.0	-9.0	-44.6
<b>5b External Trade (Volume)</b>	<i>(Metric Tons)</i>			
- Rubber	4,221.79	2,158.10	2,158.10	4,726.23
-Iron Ore	629,000.00	523,650.0	523,650.0	205,175.0
- Rice Imports O/w				
Commercial	132.2	15,014.3	5,221.7	51.8
Non-commercial	0.0	0.0	0.0	14.23
- Petroleum Products	20,085	33,283.4	7,649.7	22,432.85
	<i>(In percent)</i>			
<b>6 Overall (Year-on-year) Rate of Inflation</b>	8.9	9.8	9.6	11.7
a. Food and Non-alcoholic Beverages Inflation	5.5	5.4	7.3	9.2
- Domestic Food Inflation	5.9	7.2	1.8	6.7
- Imported Food Inflation	5.1	3.8	12.6	11.6
b. Transport Inflation	12.6	13.0	13.7	24.4
c. Imported Fuels Inflation	3.3	4.6	7.3	12.5
<b>Core Inflation</b>				
Inflation excluding Food & Non-alcoholic Beverages	12.9	14.9	12.1	14.6
Inflation excluding Imported Food	10.4	12.1	8.5	11.7
Inflation excluding Domestic Food	10.0	10.7	12.3	13.5
Inflation excluding Food and Transport	12.9	15.2	11.8	13.0

<sup>h</sup>Revised

<sup>i</sup>Not Available (NA)





# CENTRAL BANK OF LIBERIA



## Fact Sheet on Key Economic and Financial Indicators

June, 2014

Corner of Warren and Carey Streets  
 P. O. Box 2048, Monrovia  
 Tel: 231-5-960557/5-960556  
 Fax: (231) 770-59642  
 Website: [www.cbl.org.lr](http://www.cbl.org.lr)



**CENTRAL BANK OF LIBERIA**